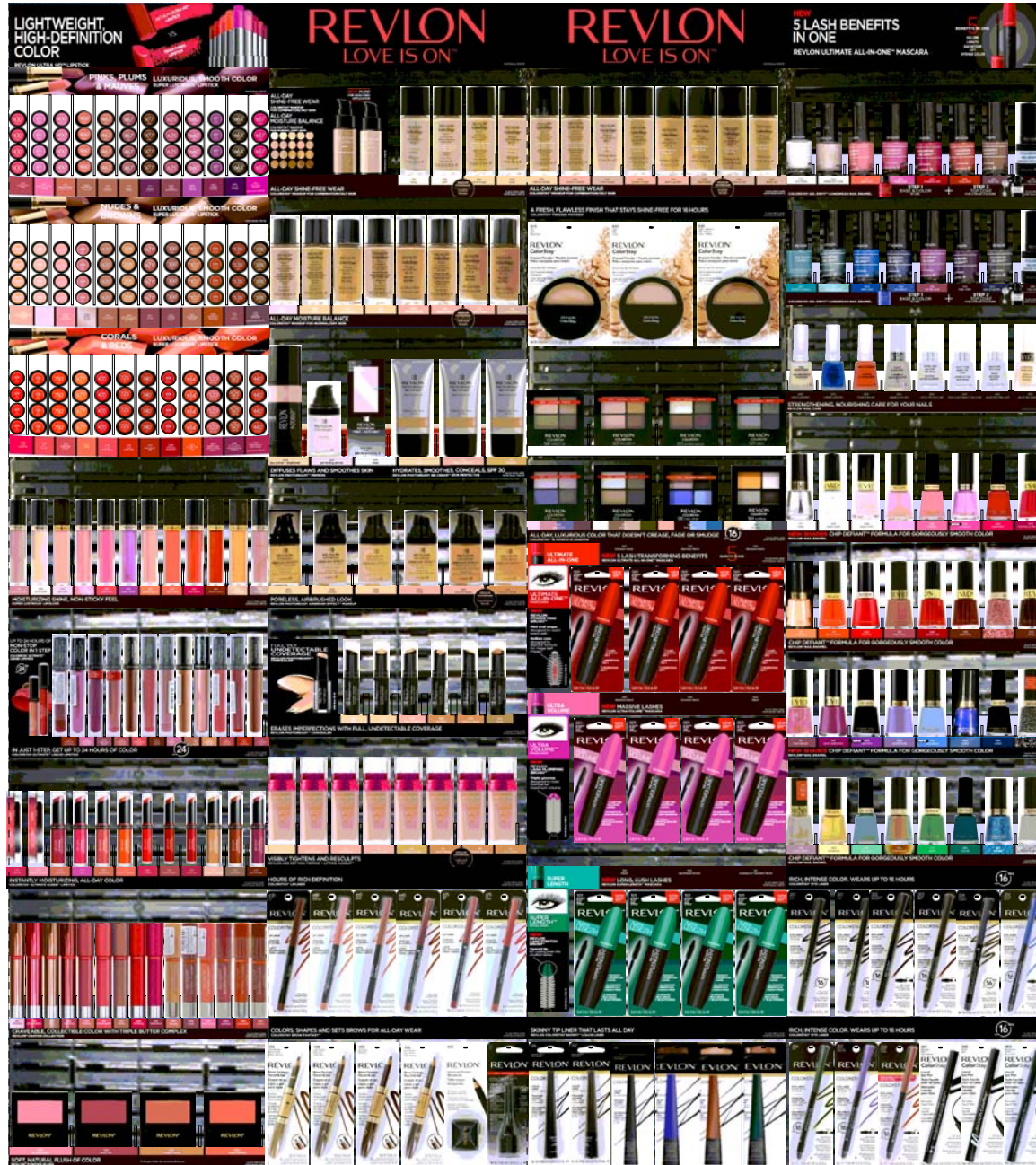


Planogram Standard

1H16 Revlon Her Wall 04X54

REVLON®

Posted 8/31/15



Planogram Standard

1H16 Revlon Her Wall 04X54

| | | | | | | | | | | | | | | |
|---|---|---|---|--|---|---|--|---|---|--|--|---|--|--|
| 3" GRAPHIC - ULTRA HD LIPSTICK 1H16 GRP#: 7611-60 Part A: 1738-33 ; Part B: N/A | | | | | | | | | | | | | | |
| HEADER - SUPER LUSTROUS LIPSTICK PINKS/MAUVES/PLUM 1H16 GRP#: 7611-80 Part A: ; Part B: | | | | | | | | | | | | | | |
| 080100005341 SUPER LUSTROUS LIPSTICK SOFT SILVER ROSE 430 | 009971415111 SUPER LUSTROUS LIPSTICK STORMY PINK 011 | 009979632275 SUPER LUSTROUS LIPSTICK GENTLEMEN PREFER PINK | 009979632312 SUPER LUSTROUS LIPSTICK BLUSHING MAUVE 460 | 009979632329 SUPER LUSTROUS LIPSTICK SASSY MAUVE 863 | 009979632350 SUPER LUSTROUS LIPSTICK PLUM BABY 467 | 009979632398 SUPER LUSTROUS LIPSTICK BLACK CHERRY 477 | 033000002002 SUPER LUSTROUS LIPSTICK ICEE AMETHYST 625 | 009973849082 SUPER LUSTROUS LIPSTICK BERRY HAUTE 860 | 009973849273 SUPER LUSTROUS LIPSTICK VIOLET FRENZY 027 | 009973849105 SUPER LUSTROUS LIPSTICK VA VIOLET 663 | 009973849068 SUPER LUSTROUS LIPSTICK FUCHSIA FUSION 657 | | | |
| TRAY - SUPER LUSTROUS LIPSTICK 2/4 2H15 GRP#: 9322-98 Part A: 2992-21 ; Part B: N/A | | | | | | | | | | | | | | |
| HEADER - SUPER LUSTROUS LIPSTICK NUDES/BROWNS 1H16 GRP#: 7611-86 Part A: ; Part B: | | | | | | | | | | | | | | |
| 009971415012 LUSTROUS LIPSTICK NUDE ATTITUDE 001 | 009973849259 SUPER LUSTROUS LIPSTICK SKY LINE PINK 025 | 080100005020 SUPER LUSTROUS LIPSTICK SILVER CITY PINK 405 | 009973849303 SUPER LUSTROUS LIPSTICK PINK PEARL 030 | 009976954035 SUPER LUSTROUS LIPSTICK BLUSHED 420 | 009977254110 SUPER LUSTROUS LIPSTICK CHAMPAGNE ONICE 205 | 009973849167 SUPER LUSTROUS LIPSTICK MINK 671 | 080100005662 SUPER LUSTROUS LIPSTICK COFFEE BEAN 800 | 009979632152 SUPER LUSTROUS LIPSTICK CARAMEL SPACE 103 | 009973849266 SUPER LUSTROUS LIPSTICK ABSTRACT ORANGE 026 | 080100009025 SUPER LUSTROUS LIPSTICK RUM RAISIN 535 | 033000000633 SUPER LUSTROUS LIPSTICK ICEE MOCHA 315 | | | |
| TRAY - SUPER LUSTROUS LIPSTICK 3/4 2H15 GRP#: 9322-99 Part A: 2992-21 ; Part B: N/A | | | | | | | | | | | | | | |
| HEADER - SUPER LUSTROUS LIPSTICK REDS/CORALS 1H16 GRP#: 7611-76 Part A: ; Part B: | | | | | | | | | | | | | | |
| 009973849297 SUPER LUSTROUS LIPSTICK RED LACQUER 029 | 080100004511 SUPER LUSTROUS LIPSTICK FIRE & ICE 720 | 009979632589 SUPER LUSTROUS LIPSTICK ME CORAL 750 | 009973849204 SUPER LUSTROUS LIPSTICK SIREN 677 | 080100004207 SUPER LUSTROUS LIPSTICK LOVE THAT PINK 435 | 080100004597 SUPER LUSTROUS LIPSTICK LOVE THAT RED 725 | 080100004634 SUPER LUSTROUS LIPSTICK CERTAINLY RED 740 | 009973849280 SUPER LUSTROUS LIPSTICK CHERRY BLOSSOM 028 | 009973849044 SUPER LUSTROUS LIPSTICK RAVISH ME RED 654 | 080100005488 SUPER LUSTROUS LIPSTICK WINE WITH EVERYTHING | 080100004436 SUPER LUSTROUS LIPSTICK WINE WITH EVERYTHING | 080100004610 SUPER LUSTROUS LIPSTICK CHERRIES IN THE SNOW 440 | | | |
| TRAY - SUPER LUSTROUS LIPSTICK 4/4 2H15 GRP#: 9721-00 Part A: 2992-21 ; Part B: N/A | | | | | | | | | | | | | | |
| 009973064454 SUPER LUSTROUS LIPGLOSS SUPER NATURAL 215 | 009973064058 SUPER LUSTROUS LIPGLOSS SNOW PINK 205 | 009973064904 SUPER LUSTROUS LIPGLOSS SKY PINK 207 | 009973064102 SUPER LUSTROUS LIPGLOSS PINKISSIMO 210 | 009973064157 SUPER LUSTROUS LIPGLOSS PINK POP 235 | 009973064409 SUPER LUSTROUS LIPGLOSS SUGAR VIOLET 230 | 009973064300 SUPER LUSTROUS LIPGLOSS PANGO PEACH 245 | 009973064959 SUPER LUSTROUS LIPGLOSS SOLAR CORAL 243 | 009973064355 SUPER LUSTROUS LIPGLOSS FATAL APPLE 240 | 009973064805 SUPER LUSTROUS LIPGLOSS DESERT SPICE 247 | 009973064850 SUPER LUSTROUS LIPGLOSS SANDSTORM 255 | 009973064553 SUPER LUSTROUS LIPGLOSS ROSY FUTURE 260 | | | |
| TRAY - SUPER LUSTROUS LIP GLOSS 1H16 GRP#: 7611-54 Part A: 2969-04 ; Part B: 1064-93 | | | | | | | | | | | | | | |
| <p>SPACE SAVER - COLORSTAY ULT LIQ LIP 1H16 GRP#: 7654-03 Part A: ; Part B:</p> | | | | | | | | | | | | | | |
| 009973174405 COLORSTAY ULTIMATE LIQUID LIPSTICK BRILLIANT BORDEAUX 040 | 009973174061 COLORSTAY ULTIMATE LIQUID LIPSTICK ULTIMATE ORCHID 006 | 009973174085 COLORSTAY ULTIMATE LIQUID LIPSTICK VIGOROUS VIOLET 008 | 009973174306 COLORSTAY ULTIMATE LIQUID LIPSTICK MIRACLE MAUVE 030 | 009973174955 COLORSTAY ULTIMATE LIQUID LIPSTICK ROYAL RAISIN 095 | 009973174108 COLORSTAY ULTIMATE LIQUID LIPSTICK PREMIUM PINK 010 | 009973174351 COLORSTAY ULTIMATE LIQUID LIPSTICK ICONIC IRIS 035 | 009973174757 COLORSTAY ULTIMATE LIQUID LIPSTICK #1 NUDE 075 | 009973174023 COLORSTAY ULTIMATE LIQUID LIPSTICK BUFFEST BEIGE 002 | 009973174603 COLORSTAY ULTIMATE LIQUID LIPSTICK STELLAR SUNRISE 060 | 009973174504 COLORSTAY ULTIMATE LIQUID LIPSTICK TOP TOMATO 050 | 009973174252 COLORSTAY ULTIMATE LIQUID LIPSTICK PREMIER PLUM 025 | | | |
| TRAY - COLORSTAY ULTIMATE LIQ LIP (12-SKU MIX) 1H15 GRP#: 8586-77 Part A: 2969-04 ; Part B: 1694-67 | | | | | | | | | | | | | | |
| 009978392538 COLORSTAY ULTIMATE SUEDE LIPSTICK STYLIST 073 | 009978392521 COLORSTAY ULTIMATE SUEDE LIPSTICK READY TO WEAR 003 | 009978392705 COLORSTAY ULTIMATE SUEDE LIPSTICK PREVIEW 070 | 009978392057 COLORSTAY ULTIMATE SUEDE LIPSTICK MUSE 005 | 009978392255 COLORSTAY ULTIMATE SUEDE LIPSTICK SOCIALITE 025 | 009978392750 COLORSTAY ULTIMATE SUEDE LIPSTICK CRUISE COLLECTION 075 | 009978392958 COLORSTAY ULTIMATE SUEDE LIPSTICK FINALE 095 | 009978392804 COLORSTAY ULTIMATE SUEDE LIPSTICK FASHIONISTA 080 | 009978392507 COLORSTAY ULTIMATE SUEDE LIPSTICK COUTURE 050 | 009978392903 COLORSTAY ULTIMATE SUEDE LIPSTICK VIEWING 090 | 009978392156 COLORSTAY ULTIMATE SUEDE LIPSTICK RUNWAY 015 | 009978392354 COLORSTAY ULTIMATE SUEDE LIPSTICK BACKSTAGE 035 | | | |
| TRAY - COLORSTAY ULT SUEDE LS 1/1 2H15 GRP#: 9299-80 Part A: 2969-04 ; Part B: 1064-93 | | | | | | | | | | | | | | |
| 009975740158 REVLON LACQUER BALM DEMURE EUR 105 | 009975740403 REVLON LACQUER BALM PROVOCAT EUR 135 | 009975740109 REVLON LACQUER BALM COY 140 | 009975740507 REVLON LACQUER BALM ENTICING 150 | 009975726107 REVLON MATTE BALM ELUSIVE 205 | 009975726251 REVLON MATTE BALM UNAPOLOGETIC 210 | 009975726152 REVLON MATTE BALM SULTRY 225 | 009975726459 REVLON MATTE BALM STRIKING 240 | 009975726503 REVLON MATTE BALM STANDOUT 250 | 009976348018 REVLON BALM STAIN HONEY 001 | 009976348056 REVLON BALM STAIN CRUSH 005 | 009976348254 REVLON BALM STAIN SWEETHEA RT 025 | 009976348308 REVLON BALM STAIN SMITTEN 030 | 009976348452 REVLON BALM STAIN ROMANTIC 045 | 009976348551 REVLON BALM STAIN ADORE 055 |
| TRAY - COLORBURST LACQ/MATTE 1 Tray (DEMURE-ADORE) GRP#: 7874-11 Part A: 2969-04 ; Part B: 1694-67 | | | | | | | | | | | | | | |
| <p>009974784016 BLUSH POWDER OH BABY! PINK 001</p> <p>009974784047 BLUSH POWDER WINE NOT 004</p> <p>009974784061 BLUSH POWDER NAUGHTY NUDE 006</p> <p>009974784078 BLUSH POWDER MELON-DRAMA 007</p> | | | | | | | | | | | | | | |
| TRAY - POWDER BLUSH (OH BABY-MELON) GRP#: 7874-15 Part A: 2969-04 ; Part B: 2969-94 | | | | | | | | | | | | | | |

Planogram Standard

1H16 Revlon Her Wall 04X54

| | | | | | | | |
|---|--|---|---|--|---|--|---|
| 3" GRAPHIC - REVLOGO 1H15 GRP#: 8546-87 Part A: 1738-33 ; Part B: N/A | | | | | | | |
| SPACE SAVER - COLORSTAY MU COMBO / NORMAL/DRY 1H16 GRP#: 7874-34 Part A: ; Part B: | | | | 309975410013 COLORSTAY MAKEUP COMBI/OILY IVORY 110 | 309975410020 COLORSTAY MAKEUP COMBI/OILY BUFF 150 | 309975410037 COLORSTAY MAKEUP COMBI/OILY SAND BEIGE 180 | 309975410044 COLORSTAY MAKEUP COMBI/OILY NUDE 200 |
| TRAY - COLORSTAY MAKEUP COMBO (IVORY-NUDE) GRP#: 7874-12 Part A: 2969-04 ; Part B: 2973-01 | | | | | | | |
| 309975415018 COLORSTAY MAKEUP NORM/DRY IVORY 110 | 309975415025 COLORSTAY MAKEUP NORM/DRY BUFF 150 | 309975415032 COLORSTAY MAKEUP NORM/DRY SAND BEIGE 180 | 309975415049 COLORSTAY MAKEUP NORM/DRY NUDE 200 | 309975415056 COLORSTAY MAKEUP NORM/DRY NATURAL BEIGE 220 | 309975415063 COLORSTAY MAKEUP NORM/DRY MEDIUM BEIGE 240 | 309975415070 COLORSTAY MAKEUP NORM/DRY FRESH BEIGE 250 | 309975415087 COLORSTAY MAKEUP NORM/DRY TRUE BEIGE 320 |
| TRAY - CS MU NORM/DRY (IVORY-TRUE BGE) GRP#: 7874-14 Part A: 2969-04 ; Part B: 2973-01 | | | | | | | |
| 309974139038 PHOTOREADY PRIMER EYE BRIGHTENING 003 | 309974104012 PHOTOREADY PRIMER PERFECTING PRIMER 001 | 309975531015 PHOTOREADY PRIME ANTI SHINE BALM CLEAR 010 | 309973132016 PHOTOREADY BB CREAM LIGHT 010 | 309973132023 PHOTOREADY BB CREAM LIGHT/MEDIUM 020 | 309973132030 PHOTOREADY BB CREAM MEDIUM 030 | | |
| TRAY - PHOTOREADY BB CREAM/PRIMERS 1H16 GRP#: 7828-45 Part A: 2969-04 ; Part B: 2969-99 | | | | | | | |
| 309975397017 PHOTOREADY AIRBRUSH EFFECT MAKEUP IVORY 001 | 309975397024 PHOTOREADY AIRBRUSH EFFECT MAKEUP VANILLA 002 | 309975397031 PHOTOREADY AIRBRUSH EFFECT MAKEUP SHELL 003 | 309975397048 PHOTOREADY AIRBRUSH EFFECT MAKEUP NUDE 004 | 309975397055 PHOTOREADY AIRBRUSH EFFECT MAKEUP NATURAL BEIGE 005 | 309975397062 PHOTOREADY AIRBRUSH EFFECT MAKEUP MEDIUM BEIGE 006 | | |
| TRAY - PHOTOREADY AIRBRUSH EFFECT MU 1/2 2H15 GRP#: 9322-18 Part A: 2969-04 ; Part B: 2969-99 | | | | | | | |
| SPACE SAVER - PHOTOREADY CONCEALER 1H16 GRP#: 7611-96 Part A: ; Part B: | | 309973212015 PHOTOREADY CONCEALER FAIR 001 | 309973212022 PHOTOREADY CONCEALER LIGHT 002 | 309973212039 PHOTOREADY CONCEALER LIGHT MEDIUM 003 | 309973212046 PHOTOREADY CONCEALER MEDIUM 004 | 309973212053 PHOTOREADY CONCEALER MEDIUM DEEP 005 | 309973212060 PHOTOREADY CONCEALER DEEP 006 |
| TRAY - PHOTOREADY CONCEALER 1H15 GRP#: 8546-04 Part A: 2969-04 ; Part B: 1506-14 | | | | | | | |
| 309974531108 AGE DEFYING MU FIRMLIFT LIFTING BARE BUFF 010 | 309974531207 AGE DEFYING MU FIRMLIFT LIFTING TENDER BEIGE 020 | 309974531306 AGE DEFYING MU FIRMLIFT LIFTING SOFT BEIGE 030 | 309974531351 AGE DEFYING MU FIRMLIFT LIFTING NATURAL BEIGE 035 | 309974531405 AGE DEFYING MU FIRMLIFT LIFTING MEDIUM BEIGE 040 | 309974531450 AGE DEFYING MU FIRMLIFT LIFTING WARM BEIGE 045 | 309974531504 AGE DEFYING MU FIRMLIFT LIFTING HONEY BEIGE 050 | 309974531658 AGE DEFYING MU FIRMLIFT LIFTING TRUE BEIGE 065 |
| TRAY - AGE DEFY FIRMLIFT MU (BAREBUFF-TRUEBGE) BLACK 1H15 GRP#: 8740-89 Part A: 2969-04 ; Part B: 2973-01 | | | | | | | |
| PEG BAR - COLORSTAY LIP LINER 1H15 GRP#: 8545-56 Part A: 2992-27 ; Part B: N/A | | | | | | | |
| 309978100027 COLORSTAY LIPLINER NUDE 630 | 309978100249 COLORSTAY LIPLINER BLUSH 680 | 309978100T40 COLORSTAY LIPLINER MAUVE 660 | 309978100065 COLORSTAY LIPLINER RAISIN 640 | 309978100T88 COLORSTAY LIPLINER WINE 670 | 309978100Z01 COLORSTAY LIPLINER RED 675 | | |
| PEG BAR - BROW FANTASY 1H15 GRP#: 8545-54 Part A: 2992-27 ; Part B: N/A | | | | | | | |
| 09972692016 BROW FANTASY LONDE 104 | 309971822063 BROW FANTASY LIGHT BROWN 108 | 309972692023 BROW FANTASY MEDIUM BROWN 105 | 309972692047 BROW FANTASY DARK BROWN 106 | 309970544430 UNIVERSAL POINTS SHARPENER N/A 600 | 309974125017 COLORSTAY CREME GEL EYE LINER BLACK 001 | | |

Planogram Standard

1H16 Revlon Her Wall 04X54

| | | | | | | | |
|---|--|--|--|---|--|--|--|
| 3" GRAPHIC - REVLOX LOGO 1H15 GRP#: 8546-87 Part A: 1738-33 ; Part B: N/A | | | | | | | |
| 309975410051 COLORSTAY MAKEUP COMBI/OILY NATURAL BEIGE 220 | 309975410068 COLORSTAY MAKEUP COMBI/OILY MEDIUM BEIGE 240 | 309975410075 COLORSTAY MAKEUP COMBI/OILY FRESH BEIGE 250 | 309975410082 COLORSTAY MAKEUP COMBI/OILY GOLDEN BEIGE 300 | 309975410099 COLORSTAY MAKEUP COMBI/OILY WARM GOLDEN 310 | 309975410105 COLORSTAY MAKEUP COMBI/OILY TRUE BEIGE 320 | 309975410112 COLORSTAY MAKEUP COMBI/OILY NATURAL TAN 330 | 309975410129 COLORSTAY MAKEUP COMBI/OILY EARLY TAN 340 |
| TRAY - CS MU COMBI/OILY (NAT BEIGE-EARLY TAN) GRP#: 7874-13 Part A: 2969-04 ; Part B: 2973-01 | | | | | | | |
| PEG BAR - COLORSTAY PRESSED POWDER 1H15 GRP#: 8586-51 Part A: 1694-35 ; Part B: N/A | | | | | | | |
| 309975424010 COLORSTAY PRESSED POWDER FAIR 810 | | | 309975424027 COLORSTAY PRESSED POWDER LIGHT 820 | | | 309975424034 COLORSTAY PRESSED POWDER LIGHT/MEDIUM 830 | |
| 309978535010 COLORSTAY EYE SHADOW QUAD ADDICTIVE 500 | | 309978535027 COLORSTAY EYE SHADOW QUAD DECADENT 505 | | 309978535041 COLORSTAY EYE SHADOW QUAD ADVENTUROUS 515 | | 309978535065 COLORSTAY EYE SHADOW QUAD SIREN 525 | |
| 309978535072 COLORSTAY EYE SHADOW QUAD SEDUCTIVE 530 | | 309978535126 COLORSTAY EYE SHADOW QUAD MOONLIT 555 | | 309978535171 COLORSTAY EYE SHADOW QUAD FREE SPIRIT 580 | | 309975217230 COLORSTAY EYE SHADOW QUAD SURREAL 584 | |
| TRAY - COLORSTAY QUADS ASSEMBLY 1H16 GRP#: 7548-97 Part A: 2319-06 ; Part B: N/A | | | | | | | |
| PEG BAR - ULTIMATE ALL-IN-ONE MASCARA 1/2 NEW 1H16 GRP#: 7548-82 Part A: 1694-36 ; Part B: N/A | | | | | | | |
| INFO PANEL - ULTIMATE ALL-IN-ONE MASCARA SM 1H16 GRP#: 7548-72 Part A: 7548-43 ; Part B: N/A | 309976386010 ULTIMATE ALL-IN-ONE MASCARA BLACKEST BLACK 501 | | | 309976386027 ULTIMATE ALL-IN-ONE MASCARA BLACK 502 | | 309976386034 ULTIMATE ALL-IN-ONE MASCARA BLACKENED BROWN 503 | |
| PEG BAR - ULTRA VOLUME MASCARA 1/2 NEW 1H16 GRP#: 7548-83 Part A: 1694-36 ; Part B: N/A | | | | | | | |
| INFO PANEL - ULTRA VOLUME MASCARA SM 1H16 GRP#: 7548-74 Part A: 7548-43 ; Part B: N/A | 309978598015 ULTRA VOLUME MASCARA BLACKEST BLACK 001 | | 309978598022 ULTRA VOLUME MASCARA BLACK 002 | | 309978598039 ULTRA VOLUME MASCARA BLACKENED BROWN 003 | | 309978601012 ULTRA VOLUME MASCARA WP BLACKEST BLACK 051 |
| PEG BAR - SUPER LENGTH MASCARA 1/2 NEW 1H16 GRP#: 7548-81 Part A: 1694-36 ; Part B: N/A | | | | | | | |
| INFO PANEL - SUPER LENGTH MASCARA SM 1H16 GRP#: 7548-70 Part A: 7548-43 ; Part B: N/A | 309978603016 SUPER LENGTH MASCARA BLACKEST BLACK 101 | | 309978603023 SUPER LENGTH MASCARA BLACK 102 | | 309978603030 SUPER LENGTH MASCARA BLACKENED BROWN 103 | | 309978604013 SUPER LENGTH MASCARA WP BLACKEST BLACK 151 |
| PEG BAR - COLORSTAY SKINNY LIQ LINER 1H15 GRP#: 8545-58 Part A: 2992-27 ; Part B: N/A | | | | | | | |
| 309974209014 COLORSTAY LIQUID LINER BLACKEST BLACK 251 | 309974209021 COLORSTAY LIQUID LINER BLACK BROWN 252 | 309975969016 COLORSTAY SKINNY LIQUID LINER BLACK OUT 301 | 309975969023 COLORSTAY SKINNY LIQUID LINER ELECTRIC BLUE 302 | 309975969030 COLORSTAY SKINNY LIQUID LINER MAHOGANY FLAME 303 | 309975969047 COLORSTAY SKINNY LIQUID LINER GREEN SPARK 304 | | |

Planogram Standard

1H16 Revlon Her Wall 04X54

| | | | | | | | |
|---|--|--|--|--|---|--|---|
| 3" GRAPHIC - ULTIMATE ALL-IN-ONE MASCARA NEW 1H16 GRP#: 7611-61 Part A: 1738-33 ; Part B: N/A | | | | | | | |
| 309976012162 COLORSTAY NAIL ENAMEL SURE THING 510 | 309976012049 COLORSTAY NAIL ENAMEL BEGINNER'S LUCK 030 | 309976012018 COLORSTAY NAIL ENAMEL LADY LUCK 110 | 309976012254 COLORSTAY NAIL ENAMEL ROYAL FLUSH 400 | 309976012261 COLORSTAY NAIL ENAMEL ROULETTE RUSH 620 | 309976012209 COLORSTAY NAIL ENAMEL LONG SHOT 630 | 309976012070 COLORSTAY NAIL ENAMEL HOLD 'EM 460 | 309976009018 COLORSTAY NAIL ENAMEL DIAMOND TOP COAT 010 |
| TRAY - COLORSTAY NAIL 1/2 1H16 GRP#: 7654-16 Part A: 2244-10 ; Part B: N/A | | | | | | | |
| 309976012223 COLORSTAY NAIL ENAMEL DEALER'S CHOICE 240 | 309976012131 COLORSTAY NAIL ENAMEL SKY'S THE LIMIT 340 | 309976012124 COLORSTAY NAIL ENAMEL WILD CARD 440 | 309976012094 COLORSTAY NAIL ENAMEL SHOWTIME 430 | 309976012087 COLORSTAY NAIL ENAMEL UP THE ANTE 410 | 309976012056 COLORSTAY NAIL ENAMEL HIGH ROLLER 450 | 309976012278 COLORSTAY NAIL ENAMEL ACE OF SPADES 500 | 309976009018 COLORSTAY NAIL ENAMEL DIAMOND TOP COAT 010 |
| TRAY - COLORSTAY NAIL 2/2 1H16 GRP#: 7654-19 Part A: 2244-10 ; Part B: N/A | | | | | | | |
| 033000002682 NAIL CARE NAIL BRIGHTENER 945 | 033000002668 NAIL CARE CUTICLE SOFTENER 935 | 033000002675 NAIL CARE TREAT & BOOST 930 | 309974015141 NAIL CARE LIQUID QUICK DRY 990 | 080100003651 NAIL CARE EXTRA LIFE TOP COAT 950 | 309978689928 NAIL CARE MULTI CARE BASE + TOP COAT 965 | 309978689942 NAIL CARE QUICK DRY TOP COAT 960 | 309978689935 NAIL CARE QUICK DRY BASE COAT 955 |
| TRAY - NAIL CARE 2H14 GRP#: 8182-01 Part A: 2976-77 ; Part B: N/A | | | | | | | |
| 091000000503 NAIL ENAMEL CLEAR 771 | 091000000855 NAIL ENAMEL PURE PEARL 020 | 099800000310 NAIL ENAMEL SHEER PINK 006 | 309978435891 NAIL ENAMEL COY 145 | 033000000060 NAIL ENAMEL BUBBLY 280 | 309978743040 NAIL ENAMEL VIVACIOUS 276 | 033000000015 NAIL ENAMEL OPTIMISTIC 290 | 091000000329 NAIL ENAMEL CHERRIES IN THE SNOW 270 |
| TRAY - NAIL ENAMEL 1/4 1H16 GRP#: 7611-10 Part A: 2976-77 ; Part B: N/A | | | | | | | |
| 309978435853 NAIL ENAMEL PRIVILEGED 715 | 309978435877 NAIL ENAMEL PROVOCATIVE 725 | 033000004044 NAIL ENAMEL FEARLESS 640 | 091000004402 NAIL ENAMEL TEAK ROSE 161 | 091000000206 NAIL ENAMEL REVLON RED 680 | 099800000464 NAIL ENAMEL VALENTINE 730 | 033000000749 NAIL ENAMEL DARING GRAFFITI 678 | 091000009148 NAIL ENAMEL VIXEN 570 |
| TRAY - NAIL ENAMEL 2/4 1H16 GRP#: 7611-17 Part A: 2976-77 ; Part B: N/A | | | | | | | |
| 033000005980 NAIL ENAMEL ICED MAUVE 151 | 099800000839 NAIL ENAMEL PLUM SEDUCTION 917 | 309978743057 NAIL ENAMEL HYPNOTIC 450 | 033000000046 NAIL ENAMEL ENCHANTING 220 | 309978743071 NAIL ENAMEL IRRESISTIBLE 733 | 309978435921 NAIL ENAMEL SULTRY 495 | 033000000107 NAIL ENAMEL URBAN 490 | 033000000756 NAIL ENAMEL REBEL GRAFFITI 732 |
| TRAY - NAIL ENAMEL 3/4 1H16 GRP#: 7611-24 Part A: 2976-77 ; Part B: N/A | | | | | | | |
| 099800000969 NAIL ENAMEL GRAY SUEDE 705 | 309978435914 NAIL ENAMEL TEMPTING 805 | 033000000077 NAIL ENAMEL ECLECTIC 580 | 033000000442 NAIL ENAMEL CHAMELEON 933 | 0330000003085 NAIL ENAMEL POSH 571 | 033000000091 NAIL ENAMEL TRENDY 590 | 080100001718 NAIL ENAMEL RADIANT 441 | 033000000732 NAIL ENAMEL DIAMOND TEXTURE 929 |
| TRAY - NAIL ENAMEL 4/4 1H16 GRP#: 7611-30 Part A: 2976-77 ; Part B: N/A | | | | | | | |
| PEG BAR - COLORSTAY EYE LINER 1H15 GRP#: 8545-55 Part A: 2992-27 ; Part B: N/A | | | | | | | |
| 309973978010 COLORSTAY EYE LINER BLACK 201 | | 309973978027 COLORSTAY EYE LINER BLACK BROWN 202 | | 309973978034 COLORSTAY EYE LINER BROWN 203 | 309973978041 COLORSTAY EYE LINER CHARCOAL 204 | 309976734057 COLORSTAY EYE LINER SAPPHIRE 205 | |
| PEG BAR - COLORSTAY EYE LINER 1H15 GRP#: 8545-55 Part A: 2992-27 ; Part B: N/A | | | | | | | |
| 309976734064 COLORSTAY EYE LINER JADE 206 | 309976734071 COLORSTAY EYE LINER AMETHYST 207 | 309976734088 COLORSTAY EYE LINER TOPAZ 208 | 309976382012 COLORSTAY LIQUID EYE PEN BLACKEST BLACK 001 | 309976382029 COLORSTAY LIQUID EYE PEN BLACK 002 | 309976382036 COLORSTAY LIQUID EYE PEN BLACKENED BROWN 003 | | |

PLANOGRAM LINE LISTING
 Planogram Standard

1H16 Revlon Her Wall 04X54

POG ID: 04x54

| Seg #1 | TRAY - SUPER LUSTROUS LIPSTICK 2/4 2H15 | | | | GRP: 9322-98 | FIXT PART A:2992-21 | FIXT PART B:N/A | Merch | NOF |
|--------|---|--------------|--------------|-------------------------|--------------|-----------------------|-----------------|-------|-----|
| LOC ID | Revlon SKU | UPC | UPC 11 Digit | Name | | Shade | Code | | |
| 1 | 1508-34 | 080100005341 | 08010000534 | SUPER LUSTROUS LIPSTICK | | SOFTSILVER ROSE | 430 | 1 | |
| 2 | 1415-11 | 309971415111 | 30997141511 | SUPER LUSTROUS LIPSTICK | | STORMY PINK | 011 | 1 | |
| 3 | 1508-27 | 309979632275 | 30997963227 | SUPER LUSTROUS LIPSTICK | | GENTLEMEN PREFER PINK | 450 | 1 | |
| 4 | 1508-31 | 309979632312 | 30997963231 | SUPER LUSTROUS LIPSTICK | | BLUSHING MAUVE | 460 | 1 | |
| 5 | 1508-32 | 309979632329 | 30997963232 | SUPER LUSTROUS LIPSTICK | | SASSY MAUVE | 463 | 1 | |
| 6 | 1508-35 | 309979632350 | 30997963235 | SUPER LUSTROUS LIPSTICK | | PLUM BABY | 467 | 1 | |
| 7 | 1508-39 | 309979632398 | 30997963239 | SUPER LUSTROUS LIPSTICK | | BLACK CHERRY | 477 | 1 | |
| 8 | 1508-12 | 033000002002 | 03300000200 | SUPER LUSTROUS LIPSTICK | | ICED AMETHYST | 625 | 1 | |
| 9 | 3849-08 | 309973849082 | 30997384908 | SUPER LUSTROUS LIPSTICK | | BERRY HAUTE | 660 | 1 | |
| 10 | 3849-27 | 309973849273 | 30997384927 | SUPER LUSTROUS LIPSTICK | | VIOLET FRENZY | 027 | 1 | |
| 11 | 3849-10 | 309973849105 | 30997384910 | SUPER LUSTROUS LIPSTICK | | VA VA VIOLET | 663 | 1 | |
| 12 | 3849-06 | 309973849068 | 30997384906 | SUPER LUSTROUS LIPSTICK | | FUCHSIA FUSION | 657 | 1 | |
| | | | | | | | | 12 | |

| Seg #1 | TRAY - SUPER LUSTROUS LIPSTICK 3/4 2H15 | | | | GRP: 9322-99 | FIXT PART A:2992-21 | FIXT PART B:N/A | Merch | NOF |
|--------|---|--------------|--------------|-------------------------|--------------|---------------------|-----------------|-------|-----|
| LOC ID | Revlon SKU | UPC | UPC 11 Digit | Name | | Shade | Code | | |
| 13 | 1415-01 | 309971415012 | 30997141501 | SUPER LUSTROUS LIPSTICK | | NUDE ATTITUDE | 001 | 1 | |
| 14 | 3849-25 | 309973849259 | 30997384925 | SUPER LUSTROUS LIPSTICK | | SKY LINE PINK | 025 | 1 | |
| 15 | 1508-02 | 080100005020 | 08010000502 | SUPER LUSTROUS LIPSTICK | | SILVER CITY PINK | 405 | 1 | |
| 16 | 3849-30 | 309973849303 | 30997384930 | SUPER LUSTROUS LIPSTICK | | PINK PEARL | 030 | 1 | |
| 17 | 1508-03 | 309976954035 | 30997695403 | SUPER LUSTROUS LIPSTICK | | BLUSHED | 420 | 1 | |
| 18 | 1508-11 | 309977254110 | 30997725411 | SUPER LUSTROUS LIPSTICK | | CHAMPAGNE ON ICE | 205 | 1 | |
| 19 | 3849-16 | 309973849167 | 30997384916 | SUPER LUSTROUS LIPSTICK | | MINK | 671 | 1 | |
| 20 | 1508-66 | 080100005662 | 08010000566 | SUPER LUSTROUS LIPSTICK | | COFFEE BEAN | 300 | 1 | |
| 21 | 1508-15 | 309979632152 | 30997963215 | SUPER LUSTROUS LIPSTICK | | CARAMEL GLACE | 103 | 1 | |
| 22 | 3849-26 | 309973849266 | 30997384926 | SUPER LUSTROUS LIPSTICK | | ABSTRACT ORANGE | 026 | 1 | |
| 23 | 1508-92 | 091000009025 | 09100000902 | SUPER LUSTROUS LIPSTICK | | RUM RAISIN | 535 | 1 | |
| 24 | 1508-67 | 033000000633 | 03300000063 | SUPER LUSTROUS LIPSTICK | | ICED MOCHA | 315 | 1 | |
| | | | | | | | | 12 | |

| Seg #1 | TRAY - SUPER LUSTROUS LIPSTICK 4/4 2H15 | | | | GRP: 9721-00 | FIXT PART A:2992-21 | FIXT PART B:N/A | Merch | NOF |
|--------|---|--------------|--------------|-------------------------|--------------|----------------------------|-----------------|-------|-----|
| LOC ID | Revlon SKU | UPC | UPC 11 Digit | Name | | Shade | Code | | |
| 25 | 3849-29 | 309973849297 | 30997384929 | SUPER LUSTROUS LIPSTICK | | RED LACQUER | 029 | 1 | |
| 26 | 1508-51 | 080100004511 | 08010000451 | SUPER LUSTROUS LIPSTICK | | FIRE & ICE | 720 | 1 | |
| 27 | 1508-58 | 309979632589 | 30997963258 | SUPER LUSTROUS LIPSTICK | | KISS ME CORAL | 750 | 1 | |
| 28 | 3849-20 | 309973849204 | 30997384920 | SUPER LUSTROUS LIPSTICK | | SIREN | 677 | 1 | |
| 29 | 1508-20 | 080100004207 | 08010000420 | SUPER LUSTROUS LIPSTICK | | LOVE THAT PINK | 435 | 1 | |
| 30 | 1508-59 | 080100004597 | 08010000459 | SUPER LUSTROUS LIPSTICK | | LOVE THAT RED | 725 | 1 | |
| 31 | 1508-63 | 080100004634 | 08010000463 | SUPER LUSTROUS LIPSTICK | | CERTAINLY RED | 740 | 1 | |
| 32 | 3849-28 | 309973849280 | 30997384928 | SUPER LUSTROUS LIPSTICK | | CHERRY BLOSSOM | 028 | 1 | |
| 33 | 3849-04 | 309973849044 | 30997384904 | SUPER LUSTROUS LIPSTICK | | RAVISH ME RED | 654 | 1 | |
| 34 | 1508-48 | 080100005488 | 08010000548 | SUPER LUSTROUS LIPSTICK | | WINE WITH EVERYTHING PEARL | 520 | 1 | |
| 35 | 1508-43 | 080100004436 | 08010000443 | SUPER LUSTROUS LIPSTICK | | WINE WITH EVERYTHING CREAM | 525 | 1 | |
| 36 | 1508-61 | 080100004610 | 08010000461 | SUPER LUSTROUS LIPSTICK | | CHERRIES IN THE SNOW | 440 | 1 | |
| | | | | | | | | 12 | |

| Seg #1 | TRAY - SUPER LUSTROUS LIP GLOSS 1H16 | | | | GRP: 7611-54 | FIXT PART A:2969-04 | FIXT PART B:1064-93 | Merch | NOF |
|--------|--------------------------------------|--------------|--------------|-------------------------|--------------|---------------------|---------------------|-------|-----|
| LOC ID | Revlon SKU | UPC | UPC 11 Digit | Name | | Shade | Code | | |
| 37 | 3064-45 | 309973064454 | 30997306445 | SUPER LUSTROUS LIPGLOSS | | SUPER NATURAL | 215 | 1 | |
| 38 | 3064-05 | 309973064058 | 30997306405 | SUPER LUSTROUS LIPGLOSS | | SNOW PINK | 205 | 1 | |
| 39 | 3064-90 | 309973064904 | 30997306490 | SUPER LUSTROUS LIPGLOSS | | SKY PINK | 207 | 1 | |
| 40 | 3064-10 | 309973064102 | 30997306410 | SUPER LUSTROUS LIPGLOSS | | PINKISSIMO | 210 | 1 | |
| 41 | 3064-15 | 309973064157 | 30997306415 | SUPER LUSTROUS LIPGLOSS | | PINK POP | 235 | 1 | |
| 42 | 3064-40 | 309973064409 | 30997306440 | SUPER LUSTROUS LIPGLOSS | | SUGAR VIOLET | 230 | 1 | |
| 43 | 3064-30 | 309973064300 | 30997306430 | SUPER LUSTROUS LIPGLOSS | | PANGO PEACH | 245 | 1 | |
| 44 | 3064-95 | 309973064959 | 30997306495 | SUPER LUSTROUS LIPGLOSS | | SOLAR CORAL | 243 | 1 | |
| 45 | 3064-35 | 309973064355 | 30997306435 | SUPER LUSTROUS LIPGLOSS | | FATAL APPLE | 240 | 1 | |
| 46 | 3064-80 | 309973064805 | 30997306480 | SUPER LUSTROUS LIPGLOSS | | DESERT SPICE | 247 | 1 | |
| 47 | 3064-85 | 309973064850 | 30997306485 | SUPER LUSTROUS LIPGLOSS | | SANDSTORM | 255 | 1 | |
| 48 | 3064-55 | 309973064553 | 30997306455 | SUPER LUSTROUS LIPGLOSS | | ROSY FUTURE | 260 | 1 | |
| | | | | | | | | 12 | |

| Seg #1 | TRAY - COLORSTAY ULTIMATE LIQ LIP (12-SKU MIX) ... | | | | GRP: 8586-77 | FIXT PART A:2969-04 | FIXT PART B:1694-67 | Merch | NOF |
|--------|--|--------------|--------------|------------------------------------|--------------|---------------------|---------------------|-------|-----|
| LOC ID | Revlon SKU | UPC | UPC 11 Digit | Name | | Shade | Code | | |
| 49 | 3174-40 | 309973174405 | 30997317440 | COLORSTAY ULTIMATE LIQUID LIPSTICK | | BRILLIANT BORDEAUX | 040 | 1 | |
| 50 | 3174-06 | 309973174061 | 30997317406 | COLORSTAY ULTIMATE LIQUID LIPSTICK | | ULTIMATE ORCHID | 006 | 1 | |

PLANOGRAM LINE LISTING

| Planogram Standard | | | | 1H16 Revlon Her Wall 04X54 | POG ID: 04x54 | | |
|--------------------|---------|--------------|-------------|------------------------------------|-----------------|-----|-----------|
| 51 | 3174-08 | 309973174085 | 30997317408 | COLORSTAY ULTIMATE LIQUID LIPSTICK | VIGOROUS VIOLET | 008 | 1 |
| 52 | 3174-30 | 309973174306 | 30997317430 | COLORSTAY ULTIMATE LIQUID LIPSTICK | MIRACLE MAUVE | 030 | 1 |
| 53 | 3174-95 | 309973174955 | 30997317495 | COLORSTAY ULTIMATE LIQUID LIPSTICK | ROYAL RAISIN | 095 | 1 |
| 54 | 3174-10 | 309973174108 | 30997317410 | COLORSTAY ULTIMATE LIQUID LIPSTICK | PREMIUM PINK | 010 | 1 |
| 55 | 3174-35 | 309973174351 | 30997317435 | COLORSTAY ULTIMATE LIQUID LIPSTICK | ICONIC IRIS | 035 | 1 |
| 56 | 3174-75 | 309973174757 | 30997317475 | COLORSTAY ULTIMATE LIQUID LIPSTICK | #1 NUDE | 075 | 1 |
| 57 | 3174-02 | 309973174023 | 30997317402 | COLORSTAY ULTIMATE LIQUID LIPSTICK | BUFFEST BEIGE | 002 | 1 |
| 58 | 3174-60 | 309973174603 | 30997317460 | COLORSTAY ULTIMATE LIQUID LIPSTICK | STELLAR SUNRISE | 060 | 1 |
| 59 | 3174-50 | 309973174504 | 30997317450 | COLORSTAY ULTIMATE LIQUID LIPSTICK | TOP TOMATO | 050 | 1 |
| 60 | 3174-25 | 309973174252 | 30997317425 | COLORSTAY ULTIMATE LIQUID LIPSTICK | PREMIER PLUM | 025 | 1 |
| | | | | | | | 12 |

| Seg #1 | TRAY - COLORSTAY ULT SUEDE LS 1/1 2H15 | | | | GRP: 9299-80 | FIXT PART A:2969-04 | FIXT PART B:1064-93 | | |
|--------|--|--------------|--------------|-----------------------------------|--------------|---------------------|---------------------|------------|-----------|
| LOC ID | Revlon SKU | UPC | UPC 11 Digit | Name | | Shade | | Merch Code | NOF |
| 61 | 8392-53 | 309978392538 | 30997839253 | COLORSTAY ULTIMATE SUEDE LIPSTICK | | STYLIST | | 073 | 1 |
| 62 | 8392-52 | 309978392521 | 30997839252 | COLORSTAY ULTIMATE SUEDE LIPSTICK | | READY TO WEAR | | 003 | 1 |
| 63 | 8392-70 | 309978392705 | 30997839270 | COLORSTAY ULTIMATE SUEDE LIPSTICK | | PREVIEW | | 070 | 1 |
| 64 | 8392-05 | 309978392057 | 30997839205 | COLORSTAY ULTIMATE SUEDE LIPSTICK | | MUSE | | 005 | 1 |
| 65 | 8392-25 | 309978392255 | 30997839225 | COLORSTAY ULTIMATE SUEDE LIPSTICK | | SOCIALITE | | 025 | 1 |
| 66 | 8392-75 | 309978392750 | 30997839275 | COLORSTAY ULTIMATE SUEDE LIPSTICK | | CRUISE COLLECTION | | 075 | 1 |
| 67 | 8392-95 | 309978392958 | 30997839295 | COLORSTAY ULTIMATE SUEDE LIPSTICK | | FINALE | | 095 | 1 |
| 68 | 8392-80 | 309978392804 | 30997839280 | COLORSTAY ULTIMATE SUEDE LIPSTICK | | FASHIONISTA | | 080 | 1 |
| 69 | 8392-50 | 309978392507 | 30997839250 | COLORSTAY ULTIMATE SUEDE LIPSTICK | | COUTURE | | 050 | 1 |
| 70 | 8392-90 | 309978392903 | 30997839290 | COLORSTAY ULTIMATE SUEDE LIPSTICK | | PRIVATE VIEWING | | 090 | 1 |
| 71 | 8392-15 | 309978392156 | 30997839215 | COLORSTAY ULTIMATE SUEDE LIPSTICK | | RUNWAY | | 015 | 1 |
| 72 | 8392-35 | 309978392354 | 30997839235 | COLORSTAY ULTIMATE SUEDE LIPSTICK | | BACKSTAGE | | 035 | 1 |
| | | | | | | | | | 12 |

| Seg #1 | TRAY - COLORBURST LACQ/MATTE 1 Tray (DEMURE-... | | | | GRP: 7874-11 | FIXT PART A:2969-04 | FIXT PART B:1694-67 | | |
|--------|---|--------------|--------------|---------------------|--------------|---------------------|---------------------|------------|-----------|
| LOC ID | Revlon SKU | UPC | UPC 11 Digit | Name | | Shade | | Merch Code | NOF |
| 73 | 5740-15 | 309975740158 | 30997574015 | REVLON LACQUER BALM | | DEMURE | | 105 | 1 |
| 74 | 5740-45 | 309975740455 | 30997574045 | REVLON LACQUER BALM | | PROVOCATEUR | | 135 | 1 |
| 75 | 5740-10 | 309975740103 | 30997574010 | REVLON LACQUER BALM | | COY | | 140 | 1 |
| 76 | 5740-50 | 309975740509 | 30997574050 | REVLON LACQUER BALM | | ENTICING | | 150 | 1 |
| 77 | 5726-10 | 309975726107 | 30997572610 | REVLON MATTE BALM | | ELUSIVE | | 205 | 1 |
| 78 | 5726-25 | 309975726251 | 30997572625 | REVLON MATTE BALM | | UNAPOLOGETIC | | 210 | 1 |
| 79 | 5726-15 | 309975726152 | 30997572615 | REVLON MATTE BALM | | SULTRY | | 225 | 1 |
| 80 | 5726-45 | 309975726459 | 30997572645 | REVLON MATTE BALM | | STRIKING | | 240 | 1 |
| 81 | 5726-50 | 309975726503 | 30997572650 | REVLON MATTE BALM | | STANDOUT | | 250 | 1 |
| 82 | 8259-01 | 309976348018 | 30997634801 | REVLON BALM STAIN | | HONEY | | 001 | 1 |
| 83 | 8259-05 | 309976348056 | 30997634805 | REVLON BALM STAIN | | CRUSH | | 005 | 1 |
| 84 | 8259-25 | 309976348254 | 30997634825 | REVLON BALM STAIN | | SWEETHEART | | 025 | 1 |
| 85 | 8259-30 | 309976348308 | 30997634830 | REVLON BALM STAIN | | SMITTEN | | 030 | 1 |
| 86 | 8259-45 | 309976348452 | 30997634845 | REVLON BALM STAIN | | ROMANTIC | | 045 | 1 |
| 87 | 8259-55 | 309976348551 | 30997634855 | REVLON BALM STAIN | | ADORE | | 055 | 1 |
| | | | | | | | | | 15 |

| Seg #1 | TRAY - POWDER BLUSH (OH BABY-MELON) | | | | GRP: 7874-15 | FIXT PART A:2969-04 | FIXT PART B:2969-94 | | |
|--------|-------------------------------------|--------------|--------------|--------------|--------------|---------------------|---------------------|------------|----------|
| LOC ID | Revlon SKU | UPC | UPC 11 Digit | Name | | Shade | | Merch Code | NOF |
| 88 | 4784-01 | 309974784016 | 30997478401 | BLUSH POWDER | | OH BABY! PINK | | 001 | 1 |
| 89 | 4784-04 | 309974784047 | 30997478404 | BLUSH POWDER | | WINE NOT | | 004 | 1 |
| 90 | 4784-06 | 309974784061 | 30997478406 | BLUSH POWDER | | NAUGHTY NUDE | | 006 | 1 |
| 91 | 4784-07 | 309974784078 | 30997478407 | BLUSH POWDER | | MELON-DRAMA | | 007 | 1 |
| | | | | | | | | | 4 |

| Seg #2 | TRAY - COLORSTAY MAKEUP COMBO (IVORY-NUDE) | | | | GRP: 7874-12 | FIXT PART A:2969-04 | FIXT PART B:2973-01 | | |
|--------|--|--------------|--------------|-----------------------------|--------------|---------------------|---------------------|------------|----------|
| LOC ID | Revlon SKU | UPC | UPC 11 Digit | Name | | Shade | | Merch Code | NOF |
| 92 | 8748-01 | 309975410013 | 30997541001 | COLORSTAY MAKEUP COMBI/OILY | | IVORY | | 110 | 1 |
| 93 | 8748-02 | 309975410020 | 30997541002 | COLORSTAY MAKEUP COMBI/OILY | | BUFF | | 150 | 1 |
| 94 | 8748-03 | 309975410037 | 30997541003 | COLORSTAY MAKEUP COMBI/OILY | | SAND BEIGE | | 180 | 1 |
| 95 | 8748-04 | 309975410044 | 30997541004 | COLORSTAY MAKEUP COMBI/OILY | | NUDE | | 200 | 1 |
| | | | | | | | | | 4 |

| Seg #2 | TRAY - CS MU NORM/DRY (IVORY-TRUE BGE) | | | | GRP: 7874-14 | FIXT PART A:2969-04 | FIXT PART B:2973-01 | | |
|--------|--|--------------|--------------|---------------------------|--------------|---------------------|---------------------|------------|-----|
| LOC ID | Revlon SKU | UPC | UPC 11 Digit | Name | | Shade | | Merch Code | NOF |
| 96 | 8751-01 | 309975415018 | 30997541501 | COLORSTAY MAKEUP NORM/DRY | | IVORY | | 110 | 1 |
| 97 | 8751-02 | 309975415025 | 30997541502 | COLORSTAY MAKEUP NORM/DRY | | BUFF | | 150 | 1 |
| 98 | 8751-03 | 309975415032 | 30997541503 | COLORSTAY MAKEUP NORM/DRY | | SAND BEIGE | | 180 | 1 |

PLANOGRAM LINE LISTING

| Planogram Standard | | | | 1H16 Revlon Her Wall 04X54 | POG ID: 04x54 | | | |
|--------------------|---------|--------------|-------------|----------------------------|---------------|-----|---|----------|
| 99 | 8751-04 | 309975415049 | 30997541504 | COLORSTAY MAKEUP NORM/DRY | NUDE | 200 | 1 | |
| 100 | 8751-05 | 309975415056 | 30997541505 | COLORSTAY MAKEUP NORM/DRY | NATURAL BEIGE | 220 | 1 | |
| 101 | 8751-06 | 309975415063 | 30997541506 | COLORSTAY MAKEUP NORM/DRY | MEDIUM BEIGE | 240 | 1 | |
| 102 | 8751-07 | 309975415070 | 30997541507 | COLORSTAY MAKEUP NORM/DRY | FRESH BEIGE | 250 | 1 | |
| 103 | 8751-08 | 309975415087 | 30997541508 | COLORSTAY MAKEUP NORM/DRY | TRUE BEIGE | 320 | 1 | |
| | | | | | | | | 8 |

| Seg #2 | TRAY - PHOTOREADY BB CREAM/PRIMERS 1H16 | | | | GRP: 7828-45 | FIXT PART A:2969-04 | FIXT PART B:2969-99 | | |
|--------|---|--------------|--------------|----------------------------------|--------------|---------------------|---------------------|----------|--|
| LOC ID | Revlon SKU | UPC | UPC 11 Digit | Name | | Shade | Merch Code | NOF | |
| 104 | 4139-03 | 309974139038 | 30997413903 | PHOTOREADY PRIMER | | EYE BRIGHTENING | 003 | 1 | |
| 105 | 4104-01 | 309974104012 | 30997410401 | PHOTOREADY PRIMER | | PERFECTING PRIMER | 001 | 1 | |
| 106 | 5531-01 | 309975531015 | 30997553101 | PHOTOREADY PRIME ANTI SHINE BALM | | CLEAR | 010 | 1 | |
| 107 | 3132-01 | 309973132016 | 30997313201 | PHOTOREADY BB CREAM | | LIGHT | 010 | 1 | |
| 108 | 3132-02 | 309973132023 | 30997313202 | PHOTOREADY BB CREAM | | LIGHT/MEDIUM | 020 | 1 | |
| 109 | 3132-03 | 309973132030 | 30997313203 | PHOTOREADY BB CREAM | | MEDIUM | 030 | 1 | |
| | | | | | | | | 6 | |

| Seg #2 | TRAY - PHOTOREADY AIRBRUSH EFFECT MU 1/2 2H15 | | | | GRP: 9322-18 | FIXT PART A:2969-04 | FIXT PART B:2969-99 | | |
|--------|---|--------------|--------------|-----------------------------------|--------------|---------------------|---------------------|----------|--|
| LOC ID | Revlon SKU | UPC | UPC 11 Digit | Name | | Shade | Merch Code | NOF | |
| 110 | 5397-01 | 309975397017 | 30997539701 | PHOTOREADY AIRBRUSH EFFECT MAKEUP | | IVORY | 001 | 1 | |
| 111 | 5397-02 | 309975397024 | 30997539702 | PHOTOREADY AIRBRUSH EFFECT MAKEUP | | VANILLA | 002 | 1 | |
| 112 | 5397-03 | 309975397031 | 30997539703 | PHOTOREADY AIRBRUSH EFFECT MAKEUP | | SHELL | 003 | 1 | |
| 113 | 5397-04 | 309975397048 | 30997539704 | PHOTOREADY AIRBRUSH EFFECT MAKEUP | | NUDE | 004 | 1 | |
| 114 | 5397-05 | 309975397055 | 30997539705 | PHOTOREADY AIRBRUSH EFFECT MAKEUP | | NATURAL BEIGE | 005 | 1 | |
| 115 | 5397-06 | 309975397062 | 30997539706 | PHOTOREADY AIRBRUSH EFFECT MAKEUP | | MEDIUM BEIGE | 006 | 1 | |
| | | | | | | | | 6 | |

| Seg #2 | TRAY - PHOTOREADY CONCEALER 1H15 | | | | GRP: 8546-04 | FIXT PART A:2969-04 | FIXT PART B:1506-14 | | |
|--------|----------------------------------|--------------|--------------|----------------------|--------------|---------------------|---------------------|----------|--|
| LOC ID | Revlon SKU | UPC | UPC 11 Digit | Name | | Shade | Merch Code | NOF | |
| 116 | 3618-01 | 309973212015 | 30997321201 | PHOTOREADY CONCEALER | | FAIR | 001 | 1 | |
| 117 | 3618-02 | 309973212022 | 30997321202 | PHOTOREADY CONCEALER | | LIGHT | 002 | 1 | |
| 118 | 3618-03 | 309973212039 | 30997321203 | PHOTOREADY CONCEALER | | LIGHT MEDIUM | 003 | 1 | |
| 119 | 3618-04 | 309973212046 | 30997321204 | PHOTOREADY CONCEALER | | MEDIUM | 004 | 1 | |
| 120 | 3618-05 | 309973212053 | 30997321205 | PHOTOREADY CONCEALER | | MEDIUM DEEP | 005 | 1 | |
| 121 | 3618-06 | 309973212060 | 30997321206 | PHOTOREADY CONCEALER | | DEEP | 006 | 1 | |
| | | | | | | | | 6 | |

| Seg #2 | TRAY - AGE DEFY FIRMLIFT MU (BAREBUFF-TRUEBG...) | | | | GRP: 8740-89 | FIXT PART A:2969-04 | FIXT PART B:2973-01 | | |
|--------|--|--------------|--------------|--------------------------------|--------------|---------------------|---------------------|----------|--|
| LOC ID | Revlon SKU | UPC | UPC 11 Digit | Name | | Shade | Merch Code | NOF | |
| 122 | 4531-10 | 309974531108 | 30997453110 | AGE DEFYING MU FIRMING LIFTING | | BARE BUFF | 010 | 1 | |
| 123 | 4531-20 | 309974531207 | 30997453120 | AGE DEFYING MU FIRMING LIFTING | | TENDER BEIGE | 020 | 1 | |
| 124 | 4531-30 | 309974531306 | 30997453130 | AGE DEFYING MU FIRMING LIFTING | | SOFT BEIGE | 030 | 1 | |
| 125 | 4531-35 | 309974531351 | 30997453135 | AGE DEFYING MU FIRMING LIFTING | | NATURAL BEIGE | 035 | 1 | |
| 126 | 4531-40 | 309974531405 | 30997453140 | AGE DEFYING MU FIRMING LIFTING | | MEDIUM BEIGE | 040 | 1 | |
| 127 | 4531-45 | 309974531450 | 30997453145 | AGE DEFYING MU FIRMING LIFTING | | WARM BEIGE | 045 | 1 | |
| 128 | 4531-50 | 309974531504 | 30997453150 | AGE DEFYING MU FIRMING LIFTING | | HONEY BEIGE | 050 | 1 | |
| 129 | 4531-65 | 309974531658 | 30997453165 | AGE DEFYING MU FIRMING LIFTING | | TRUE BEIGE | 065 | 1 | |
| | | | | | | | | 8 | |

| Seg #2 | PEG BAR - COLORSTAY LIP LINER 1H15 | | | | GRP: 8545-56 | FIXT PART A:2992-27 | FIXT PART B:N/A | | |
|--------|------------------------------------|--------------|--------------|--------------------|--------------|---------------------|-----------------|----------|--|
| LOC ID | Revlon SKU | UPC | UPC 11 Digit | Name | | Shade | Merch Code | NOF | |
| 130 | 8100-02 | 309978100027 | 30997810002 | COLORSTAY LIPLINER | | NUDE | 630 | 1 | |
| 131 | 8100-24 | 309978100249 | 30997810024 | COLORSTAY LIPLINER | | BLUSH | 680 | 1 | |
| 132 | 8100-14 | 309978100140 | 30997810014 | COLORSTAY LIPLINER | | MAUVE | 660 | 1 | |
| 133 | 8100-06 | 309978100065 | 30997810006 | COLORSTAY LIPLINER | | RAISIN | 640 | 1 | |
| 134 | 8100-18 | 309978100188 | 30997810018 | COLORSTAY LIPLINER | | WINE | 670 | 1 | |
| 135 | 8100-20 | 309978100201 | 30997810020 | COLORSTAY LIPLINER | | RED | 675 | 1 | |
| | | | | | | | | 6 | |

| Seg #2 | PEG BAR - BROW FANTASY 1H15 | | | | GRP: 8545-54 | FIXT PART A:2992-27 | FIXT PART B:N/A | | |
|--------|-----------------------------|--------------|--------------|-------------------------------|--------------|---------------------|-----------------|-----|--|
| LOC ID | Revlon SKU | UPC | UPC 11 Digit | Name | | Shade | Merch Code | NOF | |
| 136 | 6763-01 | 309972692016 | 30997269201 | BROW FANTASY | | BLONDE | 104 | 1 | |
| 137 | 6763-06 | 309971822063 | 30997182206 | BROW FANTASY | | LIGHT BROWN | 108 | 1 | |
| 138 | 6763-02 | 309972692023 | 30997269202 | BROW FANTASY | | MEDIUM BROWN | 105 | 1 | |
| 139 | 6763-04 | 309972692047 | 30997269204 | BROW FANTASY | | DARK BROWN | 106 | 1 | |
| 140 | 4815-42 | 309970544430 | 30997054443 | UNIVERSAL POINTS SHARPENER | | N/A | 600 | 1 | |
| 141 | 4125-01 | 309974125017 | 30997412501 | COLORSTAY CREME GEL EYE LINER | | BLACK | 001 | 1 | |

PLANOGRAM LINE LISTING
Planogram Standard

1H16 Revlon Her Wall 04X54

POG ID: 04x54

6

| Seg #3 | TRAY - CS MU COMBI/OILY (NAT BEIGE-EARLY TAN) | | | | GRP: 7874-13 | FIXT PART A:2969-04 | FIXT PART B:2973-01 | | |
|--------|---|--------------|--------------|-----------------------------|--------------|---------------------|---------------------|------------|-----|
| LOC ID | Revlon SKU | UPC | UPC 11 Digit | Name | | Shade | | Merch Code | NOF |
| 142 | 8748-05 | 309975410051 | 30997541005 | COLORSTAY MAKEUP COMBI/OILY | | NATURAL BEIGE | | 220 | 1 |
| 143 | 8748-06 | 309975410068 | 30997541006 | COLORSTAY MAKEUP COMBI/OILY | | MEDIUM BEIGE | | 240 | 1 |
| 144 | 8748-07 | 309975410075 | 30997541007 | COLORSTAY MAKEUP COMBI/OILY | | FRESH BEIGE | | 250 | 1 |
| 145 | 8748-08 | 309975410082 | 30997541008 | COLORSTAY MAKEUP COMBI/OILY | | GOLDEN BEIGE | | 300 | 1 |
| 146 | 8748-09 | 309975410099 | 30997541009 | COLORSTAY MAKEUP COMBI/OILY | | WARM GOLDEN | | 310 | 1 |
| 147 | 8748-10 | 309975410105 | 30997541010 | COLORSTAY MAKEUP COMBI/OILY | | TRUE BEIGE | | 320 | 1 |
| 148 | 8748-11 | 309975410112 | 30997541011 | COLORSTAY MAKEUP COMBI/OILY | | NATURAL TAN | | 330 | 1 |
| 149 | 8748-12 | 309975410129 | 30997541012 | COLORSTAY MAKEUP COMBI/OILY | | EARLY TAN | | 340 | 1 |
| | | | | | | | | | 8 |

| Seg #3 | PEG BAR - COLORSTAY PRESSED POWDER 1H15 | | | | GRP: 8586-51 | FIXT PART A:1694-35 | FIXT PART B:N/A | | |
|--------|---|--------------|--------------|--------------------------|--------------|---------------------|-----------------|------------|-----|
| LOC ID | Revlon SKU | UPC | UPC 11 Digit | Name | | Shade | | Merch Code | NOF |
| 150 | 8015-01 | 309975424010 | 30997542401 | COLORSTAY PRESSED POWDER | | FAIR | | 810 | 1 |
| 151 | 8015-02 | 309975424027 | 30997542402 | COLORSTAY PRESSED POWDER | | LIGHT | | 820 | 1 |
| 152 | 8015-03 | 309975424034 | 30997542403 | COLORSTAY PRESSED POWDER | | LIGHT/MEDIUM | | 830 | 1 |
| | | | | | | | | | 3 |

| Seg #3 | TRAY - COLORSTAY QUADS 2-TRAY ASSEMBLY (1/2) | | | | GRP: XXXXXX | FIXT PART A: | FIXT PART B: | | |
|--------|--|--------------|--------------|---------------------------|-------------|--------------|--------------|------------|-----|
| LOC ID | Revlon SKU | UPC | UPC 11 Digit | Name | | Shade | | Merch Code | NOF |
| 153 | 5217-01 | 309978535010 | 30997853501 | COLORSTAY EYE SHADOW QUAD | | ADDICTIVE | | 500 | 1 |
| 154 | 5217-02 | 309978535027 | 30997853502 | COLORSTAY EYE SHADOW QUAD | | DECADENT | | 505 | 1 |
| 155 | 5217-04 | 309978535041 | 30997853504 | COLORSTAY EYE SHADOW QUAD | | ADVENTUROUS | | 515 | 1 |
| 156 | 5217-06 | 309978535065 | 30997853506 | COLORSTAY EYE SHADOW QUAD | | SIREN | | 525 | 1 |
| | | | | | | | | | 4 |

| Seg #3 | TRAY - COLORSTAY QUADS ASSEMBLY 1H16 | | | | GRP: 7548-97 | FIXT PART A:2319-06 | FIXT PART B:N/A | | |
|--------|--------------------------------------|--------------|--------------|---------------------------|--------------|---------------------|-----------------|------------|-----|
| LOC ID | Revlon SKU | UPC | UPC 11 Digit | Name | | Shade | | Merch Code | NOF |
| 157 | 5217-07 | 309978535072 | 30997853507 | COLORSTAY EYE SHADOW QUAD | | SEDUCTIVE | | 530 | 1 |
| 158 | 5217-12 | 309978535126 | 30997853512 | COLORSTAY EYE SHADOW QUAD | | MOONLIT | | 555 | 1 |
| 159 | 5217-17 | 309978535171 | 30997853517 | COLORSTAY EYE SHADOW QUAD | | FREE SPIRIT | | 580 | 1 |
| 160 | 5217-23 | 309975217230 | 30997521723 | COLORSTAY EYE SHADOW QUAD | | SURREAL | | 584 | 1 |
| | | | | | | | | | 4 |

| Seg #3 | PEG BAR - ULTIMATE ALL-IN-ONE MASCARA 1/2 NEW... | | | | GRP: 7548-82 | FIXT PART A:1694-36 | FIXT PART B:N/A | | |
|--------|--|--------------|--------------|-----------------------------|--------------|---------------------|-----------------|------------|-----|
| LOC ID | Revlon SKU | UPC | UPC 11 Digit | Name | | Shade | | Merch Code | NOF |
| 161 | 6386-01 | 309976386010 | 30997638601 | ULTIMATE ALL-IN-ONE MASCARA | | BLACKEST BLACK | | 501 | 2 |
| 162 | 6386-02 | 309976386027 | 30997638602 | ULTIMATE ALL-IN-ONE MASCARA | | BLACK | | 502 | 1 |
| 163 | 6386-03 | 309976386034 | 30997638603 | ULTIMATE ALL-IN-ONE MASCARA | | BLACKENED BROWN | | 503 | 1 |
| | | | | | | | | | 4 |

| Seg #3 | PEG BAR - ULTRA VOLUME MASCARA 1/2 NEW 1H16 | | | | GRP: 7548-83 | FIXT PART A:1694-36 | FIXT PART B:N/A | | |
|--------|---|--------------|--------------|----------------------|--------------|---------------------|-----------------|------------|-----|
| LOC ID | Revlon SKU | UPC | UPC 11 Digit | Name | | Shade | | Merch Code | NOF |
| 164 | 8598-01 | 309978598015 | 30997859801 | ULTRA VOLUME MASCARA | | BLACKEST BLACK | | 001 | 1 |
| 165 | 8598-02 | 309978598022 | 30997859802 | ULTRA VOLUME MASCARA | | BLACK | | 002 | 1 |
| 166 | 8598-03 | 309978598039 | 30997859803 | ULTRA VOLUME MASCARA | | BLACKENED BROWN | | 003 | 1 |
| 167 | 8601-01 | 309978601012 | 30997860101 | ULTRA VOLUME MASCARA | | WP BLACKEST BLACK | | 051 | 1 |
| | | | | | | | | | 4 |

| Seg #3 | PEG BAR - SUPER LENGTH MASCARA 1/2 NEW 1H16 | | | | GRP: 7548-81 | FIXT PART A:1694-36 | FIXT PART B:N/A | | |
|--------|---|--------------|--------------|----------------------|--------------|---------------------|-----------------|------------|-----|
| LOC ID | Revlon SKU | UPC | UPC 11 Digit | Name | | Shade | | Merch Code | NOF |
| 168 | 8603-01 | 309978603016 | 30997860301 | SUPER LENGTH MASCARA | | BLACKEST BLACK | | 101 | 1 |
| 169 | 8603-02 | 309978603023 | 30997860302 | SUPER LENGTH MASCARA | | BLACK | | 102 | 1 |
| 170 | 8603-03 | 309978603030 | 30997860303 | SUPER LENGTH MASCARA | | BLACKENED BROWN | | 103 | 1 |
| 171 | 8604-01 | 309978604013 | 30997860401 | SUPER LENGTH MASCARA | | WP BLACKEST BLACK | | 151 | 1 |
| | | | | | | | | | 4 |

| Seg #3 | PEG BAR - COLORSTAY SKINNY LIQ LINER 1H15 | | | | GRP: 8545-58 | FIXT PART A:2992-27 | FIXT PART B:N/A | | |
|--------|---|--------------|--------------|-------------------------------|--------------|---------------------|-----------------|------------|-----|
| LOC ID | Revlon SKU | UPC | UPC 11 Digit | Name | | Shade | | Merch Code | NOF |
| 172 | 5805-01 | 309974209014 | 30997420901 | COLORSTAY LIQUID LINER | | BLACKEST BLACK | | 251 | 1 |
| 173 | 5805-02 | 309974209021 | 30997420902 | COLORSTAY LIQUID LINER | | BLACK BROWN | | 252 | 1 |
| 174 | 5969-01 | 309975969016 | 30997596901 | COLORSTAY SKINNY LIQUID LINER | | BLACK OUT | | 301 | 1 |

PLANOGRAM LINE LISTING

Planogram Standard

1H16 Revlon Her Wall 04X54

POG ID: 04x54

| | | | | | | | |
|-----|---------|--------------|-------------|-------------------------------|----------------|-----|----------|
| 175 | 5969-02 | 309975969023 | 30997596902 | COLORSTAY SKINNY LIQUID LINER | ELECTRIC BLUE | 302 | 1 |
| 176 | 5969-03 | 309975969030 | 30997596903 | COLORSTAY SKINNY LIQUID LINER | MAHOGANY FLAME | 303 | 1 |
| 177 | 5969-04 | 309975969047 | 30997596904 | COLORSTAY SKINNY LIQUID LINER | GREEN SPARK | 304 | 1 |
| | | | | | | | 6 |

| Seg #4 | TRAY - COLORSTAY NAIL 1/2 1H16 | | | GRP: 7654-16 | FIXT PART A:2244-10 | FIXT PART B:N/A | Merch Code | NOF |
|--------|--------------------------------|--------------|--------------|-----------------------|---------------------|-----------------|------------|-----|
| LOC ID | Revlon SKU | UPC | UPC 11 Digit | Name | Shade | | | |
| 178 | 6012-16 | 309976012162 | 30997601216 | COLORSTAY NAIL ENAMEL | SURE THING | | 510 | 1 |
| 179 | 6012-04 | 309976012049 | 30997601204 | COLORSTAY NAIL ENAMEL | BEGINNER'S LUCK | | 030 | 1 |
| 180 | 6012-01 | 309976012018 | 30997601201 | COLORSTAY NAIL ENAMEL | LADY LUCK | | 110 | 1 |
| 181 | 6012-25 | 309976012254 | 30997601225 | COLORSTAY NAIL ENAMEL | ROYAL FLUSH | | 400 | 1 |
| 182 | 6012-26 | 309976012261 | 30997601226 | COLORSTAY NAIL ENAMEL | ROULETTE RUSH | | 620 | 1 |
| 183 | 6012-20 | 309976012209 | 30997601220 | COLORSTAY NAIL ENAMEL | LONG SHOT | | 630 | 1 |
| 184 | 6012-07 | 309976012070 | 30997601207 | COLORSTAY NAIL ENAMEL | HOLD 'EM | | 460 | 1 |
| 185 | 9081-02 | 309976009018 | 30997600901 | COLORSTAY NAIL ENAMEL | DIAMOND TOP COAT | | 010 | 1 |
| | | | | | | | 8 | |

| Seg #4 | TRAY - COLORSTAY NAIL 2/2 1H16 | | | GRP: 7654-19 | FIXT PART A:2244-10 | FIXT PART B:N/A | Merch Code | NOF |
|--------|--------------------------------|--------------|--------------|-----------------------|---------------------|-----------------|------------|-----|
| LOC ID | Revlon SKU | UPC | UPC 11 Digit | Name | Shade | | | |
| 186 | 6012-22 | 309976012223 | 30997601222 | COLORSTAY NAIL ENAMEL | DEALER'S CHOICE | | 240 | 1 |
| 187 | 6012-13 | 309976012131 | 30997601213 | COLORSTAY NAIL ENAMEL | SKY'S THE LIMIT | | 340 | 1 |
| 188 | 6012-12 | 309976012124 | 30997601212 | COLORSTAY NAIL ENAMEL | WILD CARD | | 440 | 1 |
| 189 | 6012-09 | 309976012094 | 30997601209 | COLORSTAY NAIL ENAMEL | SHOWTIME | | 430 | 1 |
| 190 | 6012-08 | 309976012087 | 30997601208 | COLORSTAY NAIL ENAMEL | UP THE ANTE | | 410 | 1 |
| 191 | 6012-05 | 309976012056 | 30997601205 | COLORSTAY NAIL ENAMEL | HIGH ROLLER | | 450 | 1 |
| 192 | 6012-27 | 309976012278 | 30997601227 | COLORSTAY NAIL ENAMEL | ACE OF SPADES | | 500 | 1 |
| 193 | 9081-02 | 309976009018 | 30997600901 | COLORSTAY NAIL ENAMEL | DIAMOND TOP COAT | | 010 | 1 |
| | | | | | | | 8 | |

| Seg #4 | TRAY - NAIL CARE 2H14 | | | GRP: 8182-01 | FIXT PART A:2976-77 | FIXT PART B:N/A | Merch Code | NOF |
|--------|-----------------------|--------------|--------------|--------------|----------------------------|-----------------|------------|-----|
| LOC ID | Revlon SKU | UPC | UPC 11 Digit | Name | Shade | | | |
| 194 | 6102-00 | 033000002682 | 03300000268 | NAIL CARE | NAIL BRIGHTENER | | 945 | 1 |
| 195 | 8027-00 | 033000002668 | 03300000266 | NAIL CARE | CUTICLE SOFTENER | | 935 | 1 |
| 196 | 3786-10 | 033000002675 | 03300000267 | NAIL CARE | TREAT & BOOST | | 930 | 1 |
| 197 | 4015-14 | 309974015141 | 30997401514 | NAIL CARE | LIQUID QUICK DRY | | 990 | 1 |
| 198 | 8689-99 | 080100003651 | 08010000365 | NAIL CARE | EXTRA LIFE TOP COAT | | 950 | 1 |
| 199 | 8689-92 | 309978689928 | 30997868992 | NAIL CARE | MULTI CARE BASE + TOP COAT | | 965 | 1 |
| 200 | 8689-94 | 309978689942 | 30997868994 | NAIL CARE | QUICK DRY TOP COAT | | 960 | 1 |
| 201 | 8689-93 | 309978689935 | 30997868993 | NAIL CARE | QUICK DRY BASE COAT | | 955 | 1 |
| | | | | | | | 8 | |

| Seg #4 | TRAY - NAIL ENAMEL 1/4 1H16 | | | GRP: 7611-10 | FIXT PART A:2976-77 | FIXT PART B:N/A | Merch Code | NOF |
|--------|-----------------------------|--------------|--------------|--------------|----------------------|-----------------|------------|-----|
| LOC ID | Revlon SKU | UPC | UPC 11 Digit | Name | Shade | | | |
| 202 | 1271-76 | 091000000503 | 09100000050 | NAIL ENAMEL | CLEAR | | 771 | 1 |
| 203 | 1271-79 | 091000000855 | 09100000085 | NAIL ENAMEL | PURE PEARL | | 020 | 1 |
| 204 | 1271-31 | 099800000310 | 09980000031 | NAIL ENAMEL | SHEER PINK | | 006 | 1 |
| 205 | 8435-89 | 309978435891 | 30997843589 | NAIL ENAMEL | COY | | 145 | 1 |
| 206 | 8026-38 | 033000000060 | 03300000006 | NAIL ENAMEL | BUBBLY | | 280 | 1 |
| 207 | 8743-04 | 309978743040 | 30997874304 | NAIL ENAMEL | VIVACIOUS | | 276 | 1 |
| 208 | 8026-33 | 033000000015 | 03300000001 | NAIL ENAMEL | OPTIMISTIC | | 290 | 1 |
| 209 | 1271-51 | 091000000329 | 09100000032 | NAIL ENAMEL | CHERRIES IN THE SNOW | | 270 | 1 |
| | | | | | | | 8 | |

| Seg #4 | TRAY - NAIL ENAMEL 2/4 1H16 | | | GRP: 7611-17 | FIXT PART A:2976-77 | FIXT PART B:N/A | Merch Code | NOF |
|--------|-----------------------------|--------------|--------------|--------------|---------------------|-----------------|------------|-----|
| LOC ID | Revlon SKU | UPC | UPC 11 Digit | Name | Shade | | | |
| 210 | 8435-85 | 309978435853 | 30997843585 | NAIL ENAMEL | PRIVILEGED | | 715 | 1 |
| 211 | 8435-87 | 309978435877 | 30997843587 | NAIL ENAMEL | PROVOCATIVE | | 725 | 1 |
| 212 | 8026-26 | 033000004044 | 03300000404 | NAIL ENAMEL | FEARLESS | | 640 | 1 |
| 213 | 1271-15 | 091000004402 | 09100000440 | NAIL ENAMEL | TEAK ROSE | | 161 | 1 |
| 214 | 1271-77 | 091000000206 | 09100000020 | NAIL ENAMEL | REVLON RED | | 680 | 1 |
| 215 | 1271-46 | 099800000464 | 09980000046 | NAIL ENAMEL | VALENTINE | | 730 | 1 |
| 216 | 6256-01 | 033000000749 | 03300000074 | NAIL ENAMEL | DARING GRAFFITI | | 678 | 1 |
| 217 | 1271-63 | 091000009148 | 09100000914 | NAIL ENAMEL | VIXEN | | 570 | 1 |
| | | | | | | | 8 | |

| Seg #4 | TRAY - NAIL ENAMEL 3/4 1H16 | | | GRP: 7611-24 | FIXT PART A:2976-77 | FIXT PART B:N/A | Merch Code | NOF |
|--------|-----------------------------|-----|--------------|--------------|---------------------|-----------------|------------|-----|
| LOC ID | Revlon SKU | UPC | UPC 11 Digit | Name | Shade | | | |

PLANOGRAM LINE LISTING

| Planogram Standard | | | | 1H16 Revlon Her Wall 04X54 | POG ID: 04x54 | | | |
|--------------------|---------|--------------|-------------|----------------------------|----------------|-----|----------|--|
| 218 | 1271-78 | 033000005980 | 03300000598 | NAIL ENAMEL | ICED MAUVE | 151 | 1 | |
| 219 | 1271-97 | 099800000839 | 09980000083 | NAIL ENAMEL | PLUM SEDUCTION | 917 | 1 | |
| 220 | 8743-05 | 309978743057 | 30997874305 | NAIL ENAMEL | HYPNOTIC | 450 | 1 | |
| 221 | 8026-36 | 033000000046 | 03300000004 | NAIL ENAMEL | ENCHANTING | 220 | 1 | |
| 222 | 8743-07 | 309978743071 | 30997874307 | NAIL ENAMEL | IRRESISTIBLE | 733 | 1 | |
| 223 | 8435-92 | 309978435921 | 30997843592 | NAIL ENAMEL | SULTRY | 495 | 1 | |
| 224 | 8026-42 | 033000000107 | 03300000010 | NAIL ENAMEL | URBAN | 490 | 1 | |
| 225 | 6256-02 | 033000000756 | 03300000075 | NAIL ENAMEL | REBEL GRAFFITI | 732 | 1 | |
| | | | | | | | 8 | |

| Seg #4 | TRAY - NAIL ENAMEL 4/4 1H16 | | | GRP: 7611-30 | FIXT PART A:2976-77 | FIXT PART B:N/A | | |
|--------|-----------------------------|--------------|--------------|--------------|---------------------|-----------------|------------|-----|
| LOC ID | Revlon SKU | UPC | UPC 11 Digit | Name | Shade | | Merch Code | NOF |
| 226 | 3846-22 | 099800000969 | 09980000096 | NAIL ENAMEL | GRAY SUEDE | | 705 | 1 |
| 227 | 8435-91 | 309978435914 | 30997843591 | NAIL ENAMEL | TEMPTING | | 805 | 1 |
| 228 | 8026-39 | 033000000077 | 03300000007 | NAIL ENAMEL | ECLECTIC | | 580 | 1 |
| 229 | 8026-46 | 033000000442 | 03300000044 | NAIL ENAMEL | CHAMELEON | | 933 | 1 |
| 230 | 8026-24 | 033000003085 | 03300000308 | NAIL ENAMEL | POSH | | 571 | 1 |
| 231 | 8026-41 | 033000000091 | 03300000009 | NAIL ENAMEL | TRENDY | | 590 | 1 |
| 232 | 8026-31 | 080100001718 | 08010000171 | NAIL ENAMEL | RADIANT | | 441 | 1 |
| 233 | 6251-01 | 033000000732 | 03300000073 | NAIL ENAMEL | DIAMOND TEXTURE | | 929 | 1 |
| | | | | | | | 8 | |

| Seg #4 | PEG BAR - COLORSTAY EYE LINER 1H15 | | | GRP: 8545-55 | FIXT PART A:2992-27 | FIXT PART B:N/A | | |
|--------|------------------------------------|--------------|--------------|---------------------|---------------------|-----------------|------------|-----|
| LOC ID | Revlon SKU | UPC | UPC 11 Digit | Name | Shade | | Merch Code | NOF |
| 234 | 6734-01 | 309973978010 | 30997397801 | COLORSTAY EYE LINER | BLACK | | 201 | 2 |
| 235 | 6734-02 | 309973978027 | 30997397802 | COLORSTAY EYE LINER | BLACK BROWN | | 202 | 1 |
| 236 | 6734-03 | 309973978034 | 30997397803 | COLORSTAY EYE LINER | BROWN | | 203 | 1 |
| 237 | 6734-04 | 309973978041 | 30997397804 | COLORSTAY EYE LINER | CHARCOAL | | 204 | 1 |
| 238 | 6734-05 | 309976734057 | 30997673405 | COLORSTAY EYE LINER | SAPPHIRE | | 205 | 1 |
| | | | | | | | 6 | |

| Seg #4 | PEG BAR - COLORSTAY EYE LINER 1H15 | | | GRP: 8545-55 | FIXT PART A:2992-27 | FIXT PART B:N/A | | |
|--------|------------------------------------|--------------|--------------|--------------------------|---------------------|-----------------|------------|-----|
| LOC ID | Revlon SKU | UPC | UPC 11 Digit | Name | Shade | | Merch Code | NOF |
| 239 | 6734-06 | 309976734064 | 30997673406 | COLORSTAY EYE LINER | JADE | | 206 | 1 |
| 240 | 6734-07 | 309976734071 | 30997673407 | COLORSTAY EYE LINER | AMETHYST | | 207 | 1 |
| 241 | 6734-08 | 309976734088 | 30997673408 | COLORSTAY EYE LINER | TOPAZ | | 208 | 1 |
| 242 | 6382-01 | 309976382012 | 30997638201 | COLORSTAY LIQUID EYE PEN | BLACKEST BLACK | | 001 | 1 |
| 243 | 6382-02 | 309976382029 | 30997638202 | COLORSTAY LIQUID EYE PEN | BLACK | | 002 | 1 |
| 244 | 6382-03 | 309976382036 | 30997638203 | COLORSTAY LIQUID EYE PEN | BLACKENED BROWN | | 003 | 1 |
| | | | | | | | 6 | |